

# THE MESSIAH HERALD



**DECEMBER, 2015**

## MESSIAH LUTHERAN CHURCH

3 SOUTH THIRD STREET

MIFFLINTOWN, PA 17059

(717)-436-6213

Website: [www.mlcmifflintown.org](http://www.mlcmifflintown.org)

Email: [messiahlutheran@pa.net](mailto:messiahlutheran@pa.net)

## THE REV. WILLIAM N. ESBORN, PASTOR

35 SCENIC VIEW DRIVE

MIFFLINTOWN, PA 17059

(717)-436-9425

Email: [pastoresborn@pa.net](mailto:pastoresborn@pa.net)

[MESSIAH CHURCH CALENDAR](#)

[USS-ARK NEWSLETTER](#)

[THE LUTHERAN MAGAZINE](#)

# The Messiah Herald



*December 2015*

We now stand at an important threshold in our journey at Messiah.

I described to you in the past the challenges we face in order to maintain a full ministry at Messiah covering what to date has been the basic assumption of day to day ministry.

What we have now done is to go from a more than 25% deficit budget situation to a 20% budget surplus situation. That is not a faith stance. It is in many ways to bury God's gifts and risk little.

The calling of every and any congregation is to share the Gospel. It is to actively manifest the Gospel in the midst of the congregation and the world. It is not to protect its building, not to fund church staff including pastors, not to do anything other than to proclaim God's love through Jesus Christ and his people.

Brothers and Sisters in Christ,

We now stand at an important threshold in our journey at Messiah. I described to you in the past the challenges we face in order to maintain a full ministry at Messiah covering what to date has been the basic assumption of day to day ministry. What I described involved the pastoral ministry and the office ministry of God's people at Messiah.

What concerns me greatly is that we have now passed a congregational budget that projects \$130,000 of income and yet is only investing \$107,000 in the ministries of the congregation and the synod. What we have done is to go from an over 25% deficit budget situation to a 20% budget surplus situation. That is not a faith stance. It is in many ways to bury God's gifts and risk little.

It is a defensive stance and one that invests more in the false security of human economics than stepping out in trust with God. Nor is it one that fulfills our calling as the Body of Christ. Doing this can set a dangerous tone for a congregation and follows exactly the path that case study after case study and systems analysis tells us is a high risk path.

As important a setting a fiscal house in order is, which is something that absolutely needed to be done, so is not cutting so hard and so deep in fear that one does not simply cut fat but cuts deep into the living tissue of the Body of Christ. Such things have been fatal to many congregations.

The calling of every and any congregation is to share the Gospel. We are called to actively manifest the Gospel in the midst of the congregation and the world. Our calling is not to protect a building, not to fund church staff including pastors, not to do anything other than to proclaim God's love through Jesus Christ and his people. This has been our congregational motto for over a decade.

Our work as God's people is to witness to God's grace in Jesus Christ as he "calls, gathers, enlightens, sanctifies and keeps" us and that means it impacts and changes our lives. Our work is to do this with courage and boldness. It is to risk life for faith in God through Christ.

If we are honest about the path we have chosen it is one that asks little of us. We are not asked to step up and to help clean our church. We are not asked to volunteer to help in the church office. We have not been asked to make any sacrifices to insure Messiah is as bold in sharing the Gospel as we have been in the past. What are we going to do? We haven't talked about finding others to share the burden of our facility or creating a parish with which to share pastoral services. We have done little of anything other than to consider how to cut. Cutting is different than pruning.

All of this means we need goals to aim at and plans and strategies by which to attempt to achieve them. If we do not start plan for the future and execute a real plan for real God-centered and not budget-centered ministry the future will still come upon us and we will not like what it brings. What then will we cut?

Who can you expect to come and join us if we are not excited about a vision for Messiah? How will you convey a vision if we do not listen to God who says through Joel and Peter "I will pour out my Spirit on all people."? Your sons and daughters will prophesy, your old men will dream dreams, your young men will see visions?" Who will believe that God promises his people that he will walk with us through wilderness and exile if we do not believe first? I believe, do you?

Yours in Christ,

*Pastor Bill*

## DAILY HOME BIBLE READINGS

December	1: Numbers 17:1-11
December	2: 2 Samuel 7:18-29
December	3: Malachi 3:1-4
December	4: Luke 1:68-79
December	5: Philippians 1:3-11
December	6: Luke 3:1-6
December	7: Isaiah 40:1-11
December	8: Isaiah 19:18-25
December	9: 2 Peter 1:2-15
December	10: Zephaniah 3:14-20
December	11: Isaiah 12:2-6
December	12: Philippians 4:4-7
December	13: Luke 3:7-18
December	14: Hebrews 13:7-17
December	15: Acts 28:23-31
December	16: Luke 7:31-35
December	17: Micah 5:2-5a
December	18: Luke 1:46b-55
December	19: Hebrews 10:5-10
December	20: Luke 1:39-45 [46-55]
December	21: Colossians 1:15-20
December	22: Romans 8:18-30
December	23: Isaiah 42:14-21
December	24: Luke 2:1-14 [15-20]
December	25: Psalm 96
December	26: Acts 6:8-7:2a, 51-60
December	27: Luke 2:41-52
December	28: Matthew 2:13-18
December	29: John 21:20-25
December	30: Psalm 148
December	31: Colossians 3:12-17

## PRAYER CHAIN

Any time you wish to add a name to our prayer list, please contact Stacie Kint at [dskint@nmax.net](mailto:dskint@nmax.net) or 436-6341.



If at any time you would like to receive emails with prayer requests, please also contact Stacie.

*DIAL-A-PRAYER (436-2100) IS  
AVAILABLE 24 HOURS DAILY!*

## DECEMBER SCHEDULES

### LECTORS

6: Malin Kint  
13: Bob St. Clair  
20: Andrea Cameron  
27: Randy Clark

### ALTAR GUILD

Nov. 30—Dec. 6 Linda Clark  
Dec. 7—Dec. 27 Diana Wise & Tawny Mummah  
Dec. 28—Feb. 21 Kay Varner  
Jan. 10 Clint & Jamie Miller (cup communion)  
Feb. 7 Clint & Jamie Miller (cup communion)

### ALTAR FLOWERS

6: OPEN  
13: Judy Armstrong  
20: NO FLOWERS  
27: NO FLOWERS

### CRUCIFERS

6: Jared Hutchinson  
13: Malin Kint  
20: Marina Holderman  
27: Tai Kepler

### ACOLYTES

6: Caden Swailes & Nate Swailes  
13: Harrison Mummah & Haley Mummah  
20: Emma Arentz & Livia Arentz  
27: Tyler Rosenberry & Emma Hazard



Christmas Angel Project – Women of the ELCA will be sponsoring 7 children this year. A poster with the information is on the bulletin board in the Kitchenette. Gifts are to be wrapped, labeled with the child's name and

family number, and returned to the Adult Sunday School Room by **December 6<sup>th</sup>**.

Messiah Women of the ELCA continuously collect new bath-size bars of soap (4oz. to 5oz., preferably Ivory or unscented Dove) as an on-going project for Lutheran World Relief. Please place soap in the basket on the blue table in the Adult Sunday School Room.

Our Christmas Gathering will be Thursday, December 10, 2015 at 7:00 p.m. in the Youth Area—all ladies of the church are invited to attend and bring a friend to the Christmas Party. The attendees are asked to bring a Christmas table decoration which has special meaning for them, goodies to share and a seasonal reading or poem.



## **REMEMBER OUR SHUT-INS**

LOCUST GROVE (69 Cottage Drive, Mifflin, PA 17058)

Ethel Bossinger

Jean McNaight

190 JAM House Rd., Cottage #5  
Mifflin, PA 17058

BROOKLINE (2 Manor Blvd., Mifflintown, PA 17059)

Flo Beale                      Marian Gross  
Sara Ann Aurand

Jane Marhefka

351 Village Blvd.

Mifflintown, PA 17059

BERRY'S PERSONAL CARE CENTER (3 Alex Circle, Mifflintown, PA 17059)

Carol Simonton

NORTHRIDGE CENTER FOR ASSISTED LIVING

(99 Northridge Dr., McAlisterville, PA )

Dorothy Cleck      Dottie Smith

HONNEMAN HOUSE (58 Honneman House Dr., Apt. 108, Thompsettown, PA 17094)

Ruth Cisney              Ray Bramm

VILLAGE AT WILLOW LANE (6488 Alburdis Rd., Macungie, PA 18062)

Lura Aughey

RICHFIELD SENIOR LIVING CENTER (631 Main St., Richfield, PA 17086)

Dorothy Patterson (Cindy Van Gavree's Mother)

AT HOME

Fay McCormick

38 Wagon Wheel Lane

Mifflintown, PA 17059

Reba Sigler

23390 Rt. 35 North

Mifflintown, PA 17059

Kitty Walters

P.O. box 61

Port Royal, PA 17082

Earl & Mona Lawson

2792 William Penn Hwy.

Mifflintown, PA 17059

Jim Yetter

10 Cedar St.

Mifflintown, PA 17059

Craig Walker

7016 Rt. 333

Mifflintown, PA 17059

## **MEALS-ON-WHEELS**

Volunteer cooks, drivers, and people to help assemble meals are needed. **Cooks are especially needed for the 5<sup>th</sup> Tuesday and 5<sup>th</sup> Friday of the month.**

If you have some spare time and can help, please call Dottie Heck at 436-6002 or 717-348-1950 (cell).

Individuals, church groups, or Sunday School classes who would like to make a contribution to the Meals-On-Wheels program, your continued support would be greatly appreciated. Contributions can be sent to:

Juniata Meals-On-Wheels  
P.O. Box 251  
Mifflintown, PA 17059

## **STORE GIFT CARDS**

Giant Store Gift Cards are also now available as well as the Weis Cards to purchase from members of the Disciples Class.

## **SYNOD ASSEMBLY DELEGATES NEEDED**

Two members of Messiah are needed to attend the annual Synod Assembly in June 2016 at Susquehanna University, Selinsgrove.

Synod delegates should also plan on attending the Juniata Valley Conference Assembly the 1<sup>st</sup> Sunday of May. If you are interested in serving, please contact Pastor Esborn or the church office.



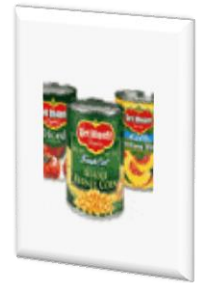
## **POINSETTIAS**

Poinsettias to decorate the church for Christmas may be placed in honor or in memory of someone, or to the Glory of God.

The cost is \$8.00 for a 6½” plant with 3 to 4 blooms. You may order by calling the church office at 436-6213.

## **CAN TREE**

Donations of gallon-size canned food is again being collected this year, now through December, to benefit Bethesda Mission. Everyone is encouraged to donate as many cans as you are able.



## **CHILDREN'S CHRISTMAS PLAY**

Messiah's youth will present their annual Christmas play at the beginning of the worship service on Sunday, December 20<sup>th</sup> beginning at 10:30 a.m. The children are very excited to continue this Messiah tradition.

Children are asked to go directly to the Junior Church Room following Sunday School between November 22<sup>nd</sup> and December 13<sup>th</sup>. Contact Kate Swailes with any questions.





## **HANGING OF THE GREENS**

Hanging of the Greens Service will be held on Sunday, December 6, 2015 during the worship service.

This year it will be the "Christmas Greens" (Service of the Manger). Please bring a nativity figure from your manger at home for the service.



## **CHRISTMAS EVE SERVICE ALL ARE WELCOME!**

The 2015 Christmas Eve Service will be one service this year, beginning at 7:30 PM Thursday, December 24<sup>th</sup>, preceded at 7:00 PM by a prelude concert of Christmas music presented by harpist Mr. Louis Lynch of Camp Hill.

This service will be a combined service of family, communion, and candle lighting. The junior and senior choirs, directed by Linda Clark and Andrea Cameron, respectively, will both provide anthems throughout the service. Service music and accompaniment for the choirs will be provided by Robert St. Clair.

Scriptures and carols will be part of the service as well.

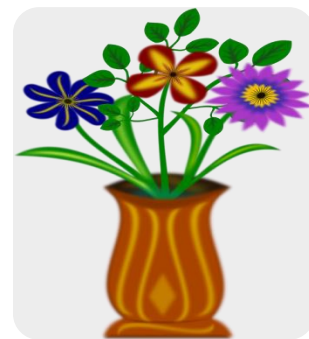
If you are willing to help be a part of this service – lecturing, candle lighting, church lights (during candle lighting), communion attendants, ushers for offering, greeters, etc., please let Diana Wise, Bob St. Clair, or Pastor Esborn know.

We look forward to this being a VERY special service this year and are anticipating the celebration of our Lord Jesus and the arrival of the Christmas season at Messiah!

## **CHRISTMAS OFFERING**

The Christmas envelope in your packet, plus the loose plate offering at the Christmas Eve Service goes to the Matthew 25 Fund to help needy people and situations throughout the year.

Please be as generous as you can.



## **FLOWER CHART**

The 2016 flower chart will be in the Adult Sunday School Room soon.

If you wish to place altar flowers in the church on a specific date, please sign-up on the chart. Flower dates are on a first-come-first-served basis.



## **CONGREGATIONAL CHRISTMAS GIFT FOR THE PASTOR**

Again this year the congregation is collecting a monetary Christmas gift for the pastor.

If you wish to contribute, you may do so during Advent or Christmas Eve by putting your gift in the special box in the Adult Sunday School Room, or in the offering plate (designated 'Pastor's Christmas Gift'). Please make checks payable to the pastor.

## **CHANGE OF ENVELOPES**

Please note that your church envelope will look different in 2016. Resource Management Director, Bob Hazard approved Bob St. Clair's research to make a change of envelope for a savings of \$200.

Envelopes will be available in alphabetical order in the Adult Sunday School Room for you to pick up later in December.

Anyone who would like a statement of their contributions for 2015 for tax purposes may call the church office and your statement will be mailed to you.

## **SECRETARY'S WEEKLY OFFICE HOURS**

Hours are as follows:

Tuesday – 9:00 a.m. – 5:00 p.m.

Thursday – 9:00 a.m. – 5:00 p.m.

Friday – 12:00 p.m. – 4:30 p.m.

## **"THE NEEDLERS" CHRISTMAS LUNCH**

"The Needlers" Christmas Lunch will be held on Tuesday, December 8, 2015 at 12:00 noon in the Fellowship Hall.

This will be the last day of sewing until Tuesday, January 5, 2016.

## **APARTMENT FOR RENT AT JAM HOUSE**

The board of directors at JAM House is looking for an individual or a couple to rent the four-room apartment attached to our house. The apartment has a separate entrance, parking and all utilities are included with the \$800/mo. Rent.

If you know of someone who may be interested, please contact Larry Wise at 436-6629.



## COMMUNITY CHORUS

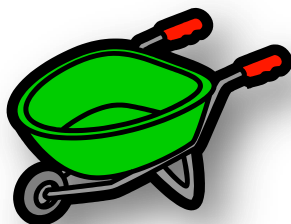
Community Chorus final two rehearsals will be held on the following dates listed below from 7:00 to 8:30 p.m. in the Juniata High School Music Room.

Monday, December 7

Tuesday, December 15

This year's 19<sup>th</sup> annual Christmas Cantata performance "The Winter Rose" will be held Sunday, December 20, 2015 at 2:00 p.m. in the Juniata High School Auditorium with live tableaux as an enhancement to the overall presentation. Should weather conditions present a need to postpone the December 20<sup>th</sup> event (December 21<sup>st</sup> and 22<sup>nd</sup> at 7:00 p.m. are available snow dates).

A special presentation will also be performed for area senior citizens on Friday, December 18<sup>th</sup> at 2:00 p.m. in the JHS Auditorium.



## HELP AVAILABLE

If you or someone you know needs help with home repairs or yard work, there are volunteers in our community who may be able to help.

For more information, contact Michael "Doc" Johnston at 436-9209.



## IN HOME SERVICES OF CENTRAL PA

In Home Services of Central PA – Helping Senior Citizens in **providing a MULTITUDE of services** such as:

- Housekeeping
- Meal Preparation/Catering
- Laundry Services
- Running of Errands
- Grocery/Personal Shopping
- Companionship
- Personal Assistance
- Home Maintenance/Painting
- Technology/Computer Assistance
- Gardening
- Bookkeeping/Banking Assistance
- Insurance Billing/Benefits Research
- Pet Care
- Assistance with Holidays/Parties/Yard Sales
- Assistance with Making a Move/Downsizing
- Beautician/Barber Services
- Alterations/Mending
- Medical Set-up & Monitoring by Nurse
- Transportation To All Appointments

Let us be **YOUR PERSONAL ASSISTANT!** For more details, please call 888-881-2046. Serving Centre, Mifflin and Juniata Counties (**LOCALLY OWNED**). Check out our website: [InHomeServicesofCentralPA.com](http://InHomeServicesofCentralPA.com).

## HAVE A HAPPY & JOYOUS CHRISTMAS SEASON

*We wish all of you a Christmas filled with blessings from God and His peace which passes all understanding.*



## **JUNIATA COUNTY FOOD PANTRY DECEMBER UPDATE**

Bravo! With your help we were able to supply 400 Thanksgiving meals to our Juniata County neighbors in need! In three weeks we'll attempt to do it all again for Christmas!

The Food Pantry served 364 families in November – 1028 individuals. Many thanks to Bunkertown Brethren in Christ Church for providing volunteers for October, and St. Stephen's Lutheran Church for November's volunteers.

### **FOOD PANTRY BASIC NEEDS FOR DECEMBER:**

**ALL NON-PERISHABLE FOODS, PERSONAL AND BABY CARE PRODUCTS, AND CLEANING SUPPLIES**

### **HOLIDAY MEAL NEEDS FOR DECEMBER:**

**HAMS, CANNED FRUITS, CANNED SWEET POTATOES, AND DESSERT MIXES**

**DONATIONS OF CASH AND GIFT CARDS ARE ALSO APPRECIATED!**

Address: P.O. Box 44, 114 N. Main St., Mifflintown, PA 17059

Phone #: 717-436-9718

Hours: Tuesday 9-12 & 1-5, Saturday 9-12

**Our vestibule is open 24 hours a day to receive Non-perishable donations. Cash or gift card donations may be deposited through the mail slot inside the vestibule.**

Visit our **Website:** [www.jcfoodpantry.com](http://www.jcfoodpantry.com)

Like us on **Face Book!**

**\*PLEASE MAKE CHECKS PAYABLE TO THE JUNIATACOUNTY FOOD PANTRY. (CONTACT PERSON: KATHY QUEITZSCH). Email: [jcfoodpantry@embarqmail.com](mailto:jcfoodpantry@embarqmail.com)**

**\*Unfortunately, we have recently been forced to lock our vestibule doors due to theft. We are very sorry for the inconvenience and are working on a solution. In the meantime, please leave donations during the hours we are open. If this is not possible, give us a call and we will work out a convenient time for you.**