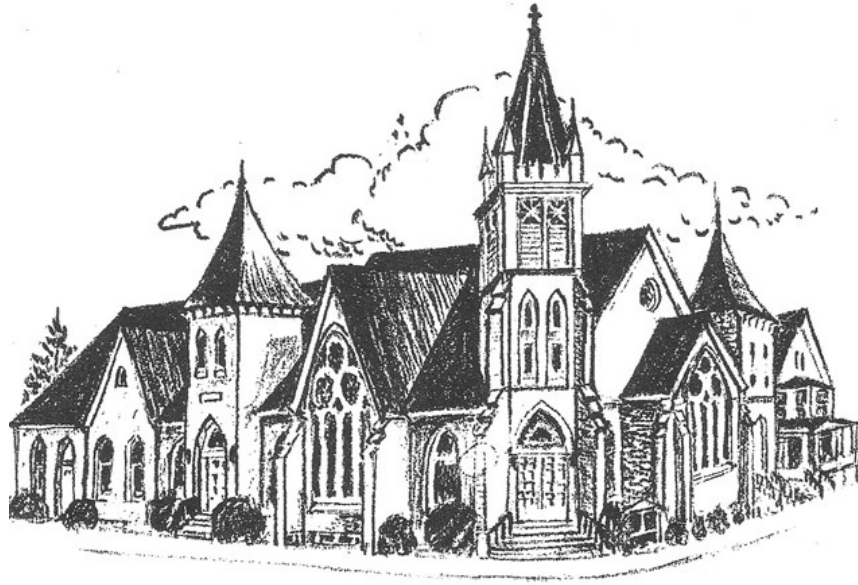


THE MESSIAH HERALD



DECEMBER, 2011

MESSIAH LUTHERAN CHURCH

3 SOUTH THIRD STREET
MIFFLINTOWN, PA 17059
(717)-436-6213
www.mlcmifflintown.org
mlcmifflintown@pa.net

THE REV. WILLIAM N. ESBORN, PASTOR

35 SCENIC VIEW DRIVE
MIFFLINTOWN, PA 17059
(717)-436-9425
pastoresborn@pa.net

[MESSIAH CHURCH CALENDAR](#)

[USS-ARK NEWSLETTER](#)

[THE LUTHERAN MAGAZINE](#)

“Proclaiming God’s love revealed in Jesus Christ and his People”

The Messiah Herald



December 2011

Brothers and Sisters in Christ,

Each year at Christmas we have participated in the Angel Project within the county and helped to provide for families some of the essential needs for their children.

There is even a more important gift we can provide to these and all kids across our community. That is the gift of safety from any and all types of abuse.

We have many people in our congregation who by virtue of their professions and work are mandated reporters of child abuse. I, as a pastor, am one of them. However, morally not being a “mandated” reporter does not absolve one of the responsibilities to make such a report.

God became incarnate in the world in the form of the vulnerable Christ child, an infant who was given into the care of parents who did everything to protect that child from the threats of the world traveling all the way to Egypt.

Each year at Christmas we have participated in the Angel Project within the county and helped to provide for families some of the essential needs for their children. Specifically, we help to provide various articles of clothing. Many of these children if not almost all would be considered at risk kids due to either being in low income homes, near or below the poverty level, in single parent homes, or combinations of these along with other social challenges. We in turn are blessed to have the opportunity to respond and share the gifts with which God has blessed our lives.

There is even a more important gift we can provide to these and all kids across our community. That is the gift of safety from any and all types of abuse. The terrible events in State College of these last couple of weeks remind us how important that safety is.

We have many people in our congregation who by virtue of their professions and work are mandated reporters of child abuse. I, as a pastor, am one of them. It is a responsibility I take very seriously. Our many school teachers are, also, mandated reporters as are administrators. So are doctors, dentists, optometrists, nurses, funeral directors, day care workers, social workers, law enforcement officers, and more. This responsibility is a sacred trust we have for our children’s safety.

Being a reporter is not as simple as it may seem on its face; however, sometimes the most critical thing is knowing to whom one reports suspected abuse. For individuals, such as, myself as a pastor, it is pretty cut and dry. I can report it to the Department of Public Welfare or the appropriate local agency, orally, and may file a written report with the appropriate local agency. For others it is not as intuitive, as the law provides for persons within organizations like school districts to report it up the organizational structure to the person in charge of the institution. It is then that person in charge or someone within the organization charged with that responsibility who makes such a report.

However, morally not being a “mandated” reporter does not absolve one of the responsibilities to make such a report. In fact, I wish that in PA our law was similar to Nebraska’s where everyone is a mandated reporter and that we would all receive training. I would encourage all of us to contact our legislators to encourage them to take just such an action. Every child should be kept safe and every parent should be able to know that their child is safe.

Because of these recent events I believe the time has come for us to forgo the inconveniences of process to make sure that every adult in our congregation working with our children has a basic background check and clearances. Many already do. Doing this allows us to say to parents that we as a congregation take seriously the security of their children.

God became incarnate in the world in the form of the vulnerable Christ child, an infant who was given into the care of parents who did everything to protect that child from the threats of the world. These were parents who took the child on the long journey to Egypt to protect the child from Herod’s wrath. It is part of the amazing story of the lengths that God has gone to secure our salvation.

The power of that Biblical story encourages us to go the distance to maximize the protection that we can offer to every child. May God bless us this holiday season with the will to do everything that we can to make sure that every child has the protection of good clothing and the security of a safe community. May you all have a blessed Christmas season.

Yours in Christ,

Pastor Bill

DAILY HOME BIBLE READINGS

December 1: Isaiah 40:1-11
December 2: Psalm 85:1-2, 8-13
December 3: 2 Peter 3:8-15a
December 4: Mark 1:1-8
December 5: Isaiah 26:7-15
December 6: Isaiah 4:2-6
December 7: Malachi 2:10—3:1
December 8: Isaiah 61:1-4, 8-11
December 9: Psalm 126
December 10: 1 Thessalonians 5:16-24
December 11: John 1:6-8, 19-28
December 12: 1 Kings 18:1-18
December 13: 2 Kings 2:9-22
December 14: Malachi 3:16—4:6
December 15: 2 Samuel 7:1-11, 16
December 16: Luke 1:46-55
December 17: Romans 16:25-27
December 18: Luke 1:26-38
December 19: Hebrews 9:1-14
December 20: 1 Samuel 1:19-28
December 21: Isaiah 9:2-7
December 22: Psalm 96
December 23: Luke 2:1-7
December 24: Luke 2:8-20
December 25: John 1:1-14
December 26: Acts 6:8-15; 7:51-60
December 27: 1 John 1:1-9
December 28: Matthew 2:13-18
December 29: Isaiah 61:10—62:3
December 30: Psalm 148
December 31: John 8:12-19



PRAYER REQUESTS

Prayer Requests will be placed in the weekly bulletin for one month.

If you wish to have someone included in the prayer list for more than one month, please call the church office.

DIAL-A-PRAYER (436-2100) IS AVAILABLE 24 HOURS DAILY!

DECEMBER SCHEDULES

LECTORS

4: Andrea Cameron
11: Linda Bahorik
18: Diana Wise
25: Sam Leister

ALTAR GUILD

Nov. 28—Dec. 4 Linda Clark
Dec. 5—Dec. 11 Sandy Pines
Dec. 12—Dec. 18 Diana Wise
Dec. 19—Dec. 25 Linda Leister & Christie Holderman
Dec. 26—Jan. 29 Kay Varner
(Jan. 8) Clint & Jamie Miller (Cup Communion)

ALTAR FLOWERS

4: Don & Barb Geedey
11: Reserved
18: Judy Armstrong
25: NO FLOWERS



Messiah Women of the ELCA met Thursday, November 10, 2011 with Linda Leister as devotional leader. The topic for the evening was "Prayer, Praise and Pumpkins." We listened to a reading "Prayers are Precious Jewels" and followed it with the hymn "What a Friend We Have in Jesus" and heard the origin of the song. "Praise to God" was the next reading and we sang "Come Ye Thankful People Come." We also learned the history of the song. We were quizzed about "pumpkin facts." Some facts we learned about pumpkins were: Top pumpkin

CHILD FUND INTERNATIONAL

production states are Pennsylvania, Ohio, Illinois and California. Pumpkin flowers are edible. Pumpkins are used to make soups, pies and breads. Pumpkins originated in Central America. The name pumpkin originated from "pepon"—the Greek word for "large melon." As a special request, we sang "Bringing in the Sheaves."

Thank you Linda.

The business meeting was in charge of Linda Leister in the absence of Barbara S. Geedey, Leader.

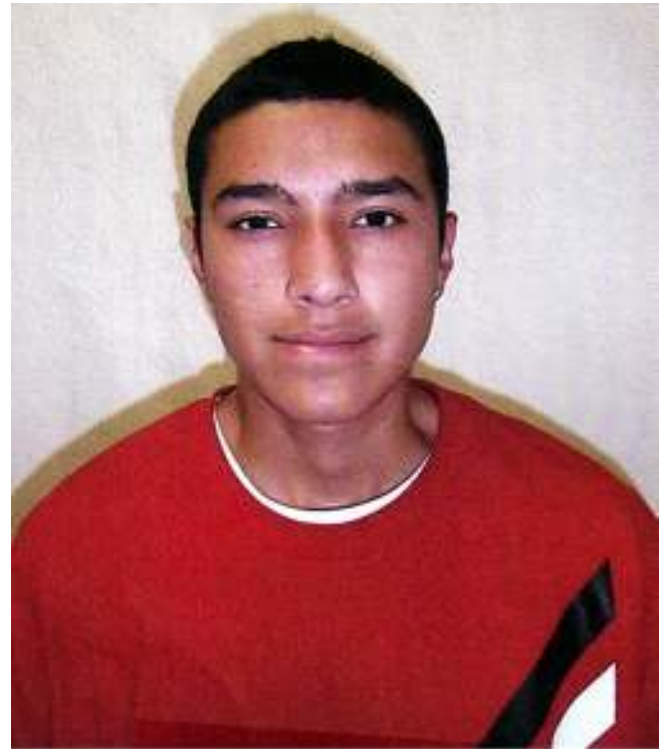
Business discussed:

- Plans for "Thankoffering Sunday" were completed.
- Christmas gift for Tyson, our Native American teenager. Discussion will be completed at the next meeting.
- Christmas Angel Project still needs people to sign-up for gifts.

The next meeting will be "The Christmas Festival," Thursday, December 8, 2011 at 7:00 p.m. in the Youth Area. Everyone is asked to bring a reading to share and a "goodie" for the refreshment table.

The meeting adjourned with the reading of "The Purpose" of the Women of the ELCA.

REMINDER: Women of the ELCA continuously collect new bath-size bars of soap (4 oz. to 5 oz., preferably Ivory or unscented Dove) as an on-going project for Lutheran World Relief. Please place soap in the basket on the blue table in the Sunday School Room.



Messiah Women of the ELCA received a progress report from our Native American teenager that we have supported for a number of years. Tyson C. LeCompte is a member of the Rose Bud Tribe located near Rapid City, South Dakota. He is 17 years old and is in the 11th grade. He is 6 feet 1 inch tall, weighs 140 pounds and plans to play high school basketball. His favorite class is math and his grades are B's and C's. Tyson is undecided about what he wants to do in the future. His message to us is "I'm very thankful that there is someone out there that goes out of their way to send gifts all this way. Thank you."

IN APPRECIATION FOR YOUR HELP

**"Lutheran Disaster Ministries"
Thankoffering Service
November 13, 2011**

--Thank you to Briley Holderman and Hunter Berry as acolytes and offering attendants.



- Thank you to Cynthia Smith as lector.
- Thank you to the ushers Pat Fisher, Cynthia Smith, Kay Varner, and Dorothy Smith.
- Thank you to communion assistants Linda Leister, Jeanette Gross, Cynthia Smith and Andrea Cameron.
- Thank you to Margaret Guss as worship leader.
- Thank you to the choir for the anthem, "Give Thanks" and leading the hymns.
- Thank you to Carole Nace for presiding at the organ.
- Thank you to Elizabeth Yenchko for the homily.
- Thank you to Pastor Bill for presiding at the communion service.
- Thank you to Wayne Miller for operating the sound system.
- Thank you to the congregation for their attendance and participation.
- Thank you to the Board of Fellowship and kitchen crew for the festive "Fall Fest."
- Thank you to Linda Leister for serving on the altar guild.
- Thank you to the counters of the collection.
- Thank you to Judy Armstrong for the bulletins.
- Thank you to Barbara Partner for the bulletin cover design.

It takes many volunteers to make a church service.



REMEMBER OUR SHUT-INS

LOCUST GROVE

Jean McNaight (Cottage #5)
 Ethel Bossinger Sue Collins
 Sis Stetler

BROOKLINE

Flo Beale Virginia Feaster
 Marian Gross
 Anna Mary Zimmerman

BERRY'S PERSONAL CARE CENTER

Goldie Kauffman Carol Simonton

HONNEMAN HOUSE, THOMPSONTOWN

Ruth Cisney Ray Bramm

ELMCROFT OF REEDSVILLE

Helen Knox

LAKEVIEW SENIOR CARE CENTER, SMETHPORT, PA

Cathryn Renninger

NORTH STREET MANOR

Florence Beasom

AT HOME

Reba Sigler Cassie Smith

OTHERS OF CONCERN

- Martha Hicks, Locust Grove (Barb S. Geedey's Aunt)
- Craig Walker
- Dorothy Patterson (Cindy Van Gavree's Mother)
- Jane Marhefka, at home
- Fannie King, at home
- Bud Crawford, at Brookline



CHRISTMAS ANGEL PROJECT

Women of the ELCA will be sponsoring 2 families this year for the Christmas Angel Project. A poster with the information is on the bulletin board in the kitchenette.

Gifts are to be wrapped, labeled with the children's name and family number, and returned to the Sunday School Room by December 4, 2011.

CHURCH ORGANIST NEEDED

Church Organist for weekly services, beginning immediately, at Messiah Lutheran Church, 3 South Third Street, Mifflintown, PA. Allen Digital Electric Organ and Kurzweil Electronic Keyboard.

Candidates should contact Ed Beaver at ebeaver41@yahoo.com or at 436-9382 for information, including salary. Additional information about the church and congregation can be found at www.mlcmifflintown.org.

MEALS-ON-WHEELS

Individuals, church groups, or Sunday School classes who would like to make a contribution to the Meals-On-Wheels program, your continued support would be greatly appreciated. Contributions can be sent to:

Juniata Meals-On-Wheels
P.O. Box 251
Mifflintown, PA 17059

UPCOMING EVENTS

November 27, Light lunch after worship service, prepared by the Fellowship Committee. Those attending are asked to bring 1-2 doz. Cookies. Decorating of the church following lunch.

December 3, Fellowship Hall reserved – afternoon & evening. Civil War re-enactors fashion show.

December 4, Hanging of the Greens Service, 10:30 a.m.

December 6, “The Needlers” Christmas luncheon.

December 7, Showers Class Christmas Banquet at Turbett Grange Hall at 6 p.m. Bring item for Juniata Co. Food Pantry.

December 8, WELCA Christmas Festival at 7 p.m. in the Youth Area.

December 18, Children's Sunday School Christmas Program at 9:15 a.m. Fellowship Committee will provide cookies and beverage.

December 18, Christmas Cantata at 2 p.m. at Juniata High School.

December 24, 7 p.m., Children's Christmas Eve Service; 9:30 p.m., Prelude Concert with Louis Lynch; 10 p.m., Candlelight/Communion Service.

January 7, Undecorating the church (morning).





POINSETTIAS

Poinsettias to decorate the church for Christmas may be placed in honor or in memory of someone, or to the Glory of God. The cost is \$8.00 for a 6-1/2" plant with 3 to 4 blooms.

You may order by calling the church office at 436-6213.

SYNOD ASSEMBLY DELEGATES NEEDED

Two members of Messiah are needed to attend the annual Synod Assembly in June, 2012 at Susquehanna University, Selinsgrove.

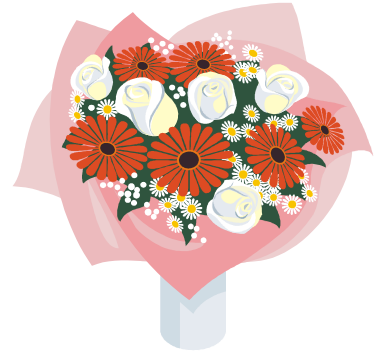
If you are interested in serving, please contact the pastor or the church office.



CAN TREE

Donations of gallon-size canned food is again being collected this year, now through December, for the "can tree" in the Adult Sunday School Room to benefit Bethesda Mission.

Everyone is encouraged to donate as many cans as you are able. Cans will be delivered to Bethesda Mission later in December.



FLOWER CHART

The 2012 flower chart will be in the Adult Sunday School Room by the end of December.

If you wish to place altar flowers in the church on a specific date, please sign-up on the chart. Flower dates are on a first-come-first-served basis.

CHRISTMAS OFFERING

The Christmas envelope in your packet, plus the loose plate offering at the Christmas Eve Service goes to the Pastor's Discretionary Fund to help needy people and situations throughout the year.

Please be as generous as you can.

2012 CHURCH ENVELOPES

The 2012 church offering envelopes will be available in the Adult Sunday School Room for you to pick-up later in December.

Anyone who would like a statement of their contributions for 2011 for tax purposes may call the church office and your statement will be mailed to you.

CONGREGATIONAL CHRISTMAS GIFT FOR THE PASTOR

Again this year the congregation is collecting a monetary Christmas gift for the pastor.

If you wish to contribute, you may do so during Advent or Christmas Eve by putting your gift in the special box in the Adult Sunday School Room, or in the offering plate (designated "Pastor's Christmas Gift"), or to the church office any weekday. (Please make checks payable to the pastor).



COMMUNITY CHORUS

Community Chorus rehearsals will be held on the following dates from 7:00 to 8:30 p.m. in the Juniata High School music room. (Even if you cannot attend all of the rehearsals, please don't hesitate to join the group).

Monday, December 5
Tuesday, December 13

This year's 15th annual Christmas Cantata performance "*Dawn of Redeeming Grace*" will be held **Sunday, December 18, 2011** at 2:00 p.m. in the auditorium of Juniata High School.



BELL RINGERS NEEDED

The Juniata County Branch of the Salvation Army needs bell ringers for the holiday season.

Individuals, Sunday School classes, or youth groups who are willing to help may call Sylvia Kepner at 527-2386.

BLOOD DRIVES

The American Red Cross will be holding the following local blood drives:

Thursday, December 1, 2011
1:00 pm – 7:00 pm
St. John's United Methodist Church
McAlisterville, PA

Friday, December 30, 2011
12:00 pm – 6:00 pm
Fayette Area Lions Den
McAlisterville, PA

Wednesday, January 11, 2012
1:00 pm – 7:00 pm
Port Royal Community Building
Port Royal, PA

Saturday, January 14, 2012
Tuscarora Valley Elementary School
9:00 am – 3:00 pm
Port Royal, PA

The need for blood never diminishes because blood is a perishable medicine. Individuals who are in general good health, are age 17 or older and weigh at least 110 pounds are eligible to donate every 56 days. Individuals should bring their Red Cross donor cards, photo ID or two other forms of identification to the donor site. To schedule an appointment call 1-800 Red Cross.

ST. JUDE COOKIE JAR CHRISTMAS COOKIE WALK

Check baking cookies off your list—we've done it for you! Pick up your cookies on December 10, 2011 from 9:00 a.m. to ? at St. Jude's Catholic Church, Mifflintown, PA.

Come early and have a cup of coffee and shop at our White Elephant Table for unique holiday items (doors open at 8:00 a.m.). Cookie boxes will be \$9.00 each with approximately 4 dozen cookies. Sponsored by St. Jude's Women's Guild.



HAVE A HAPPY & JOYOUS CHRISTMAS SEASON

We wish all of you a Christmas filled with blessings from God and His peace which passes all understanding.

(W)HOLY, (W)HOLY, (W)HOLY Health, Healing and Wholeness December 2011

"Then Peter came and said to him, 'Lord, if another member of the church sins against me, how often should I forgive? As many as seven times?' Jesus said to him, 'Not seven times, but, I tell you, seventy-seven times.' " (Matthew 18:21-22; NRSV)

Forgive ... such a small word, yet so

hard to comprehend and to put into practice! Though it is changing, there is still relatively little research on the direct connection between forgiving and health – no direct evidence that proves once-and-for-all that holding a grudge leads to long-term health problems. There is however, a great deal of scientific evidence that **does** exist on the health affects of depression, anxiety, and anger – by products of the hurt and betrayal felt when someone has wronged us – increased blood pressure, increase in heart rate, the release of hormones that trigger out fight-or-flight reactions, headache, stomach problems, sleeplessness – all occurring whenever we allow the painful episode to rewind and replay over and over in our minds.

We compound these effects whenever we allow the 'things we wish we'd said' to roll across our tongues as we smack our lips at the thought of retribution. The result is that we begin to stew in our own juices, and the one who actually gets hurt is us. Rev. Dr. Lewis Smedes once said, "To forgive is to set a prisoner free, and to discover the prisoner was you." Forgiveness, as well as its opposites, resentment and revenge, all begin the same way – **with a decision.**

Lest we confuse the two, let's begin by saying that forgiveness **does not** mean forgetting! It does not sanction or justify the actions of the one who has deeply wounded us, and does not release the other person from responsibility – or in some cases, even legal punishment. Those who forgive are not fools – it doesn't mean that the relationship can, or even should, go back to the same as prior to the incident. Instead, forgiveness empowers **us** to take responsibility for our own future happiness. The process may not be easy, and likely will not adhere to a set time table – we may even find we need to work and re-work our way through it. In some cases, forgiving

can be extremely difficult, so it may be wise to find someone trained to assist in the process – someone we trust, such as our pastor or a therapist.

The important point is that we don't have to wait for the other party to say they are sorry – we could have a rather long wait – one that leaves **us** stuck with the pain. Instead, with God's grace, working through the process of forgiving empowers us to become the ones who determine when the healing begins; that typically means allowing ourselves to feel the full impact of the pain incurred. Trying to forget and push the resulting emotions out of our awareness, only leads to repressed feelings that can later manifest themselves in other emotional or physical ways (for example, chronic headaches, depression, ulcers or in some extremes, substance abuse).

The bottom line is this; recognizing the fact that we can forgive the person without forgiving his/her actions, takes away that individual's power over us, and in the process allows us to no longer be held captive to the role of being a victim. Through prayer, scripture, and openness to the Spirit, God reminds us that He has come to us – to journey with us to healing and release from the pain that has made us captive. Consider forgiveness to be the gift that you give yourself this Christmas. Take that first step. Emmanuel has come to accompany you on your journey toward wholeness in body, mind and spirit.

May God's Blessing be with you and your loved ones during this season of joy.

Debbie Best



REVERENDFUN.COM COPYRIGHT BIBLE GATEWAY



Thanks to Andrew S.

12-21-2007

ETERNAL LIFE, MY FAVORITE ... THANKS JESUS!

Juniata County Food Pantry December Update

MERRY CHRISTMAS! IN OCTOBER, THE FOOD PANTRY SERVED 282 FAMILIES IN NEED – A TOTAL OF 816 INDIVIDUALS. WE THANK BUNKERTOWN CHURCH OF THE BRETHREN FOR PROVIDING VOLUNTEERS FOR THE MONTH. IN NOVEMBER AND DECEMBER WE ARE TRYING TO PROVIDE A HOLIDAY MEAL TO EACH OF OUR ALMOST 300 FAMILIES! PLEASE HELP IF YOU CAN!

FOOD PANTRY NEEDS FOR DECEMBER

TURKEYS, HAMS, FRESH POTATOES, APPLES & ORANGES, CRANBERRY SAUCE, SWEET POTATOES, CAKE MIX AND READY-MADE ICING. AND, ONE OF OUR CUSTOMERS BIGGEST REQUESTS: LAUNDRY DETERGENT! PLEASE! DON'T LET OUR CARTS GO EMPTY!

I WANT TO HELP MY NEIGHBORS IN NEED! ENCLOSED IS MY CONTRIBUTION OF \$_____

**PLEASE MAKE CHECKS PAYABLE TO THE JUNIATA COUNTY FOOD PANTRY, P.O. BOX 44, 114 N. MAIN ST., MIFFLINTOWN, PA 17059. FOR MORE INFORMATION PLEASE CALL: 436-9718*

*LOCAL GROCERY AND DISCOUNT STORE GIFT CARDS ARE ALSO APPRECIATED!

PLEASE DESIGNATE MY CONTRIBUTION FOR THE FOLLOWING:

- FOOD FOR THOSE IN NEED
- BABY, PERSONAL CARE & CLEANING ITEMS
- BUILDING FUND FOR OUR FUTURE
- WHEREVER NEED IS GREATEST

NAME(S) _____

ADDRESS _____

PHONE #: 717-436-9718 CONTACT PERSON: KATHY QUEITZSCH

ADDRESS: PO BOX 44, 114 N. MAIN ST., MIFFLINTOWN, PA 17059

HOURS: MON. 1--4 PM, TUES./THURS. 3--6 PM SAT. 10:00 AM– 1:00 PM

